



RL Series

T5 LED Lamp

2,800 Lumens

Project: _____

Location: _____

Cat.No: _____

Notes: _____

Product Description

The RL Series lamps provide an energy-efficient and cost-effective upgrade from traditional fluorescent lighting. Installation is straightforward, requiring only the bypassing of the ballast and direct wiring to the tombstones. With a wide range of color options, lens styles, and lumen outputs, these lamps are versatile and can seamlessly replace existing fluorescent or LED bulbs in virtually any fixture. Ideal for enhancing both performance and aesthetics, the RL Series combines ease of installation with flexible options to suit your specific lighting needs.

Application

This unit excels in any application that has existing lamps that you want to replace. Typically used in areas such as retail stores, offices, hallways, garages, shops, basements and many more commercial, industrial or agricultural settings.

Features

- Very high efficacy of 160 LM/Watt
- Ballast bypass, direct line voltage

Options

- Various lens style and color options
- Single end powered
- Double end powered

Mounting

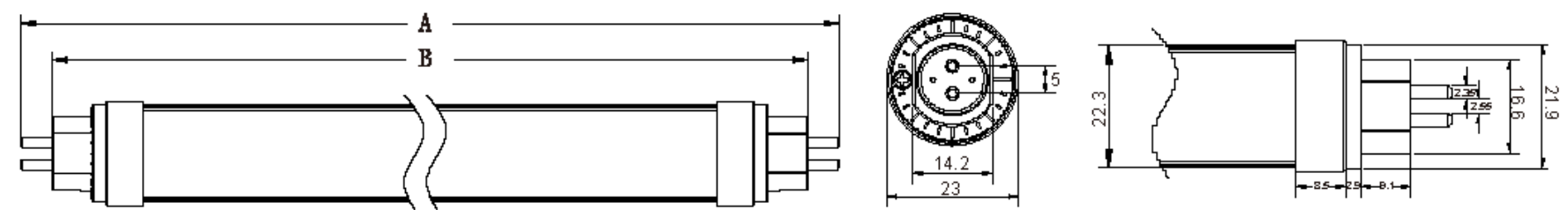
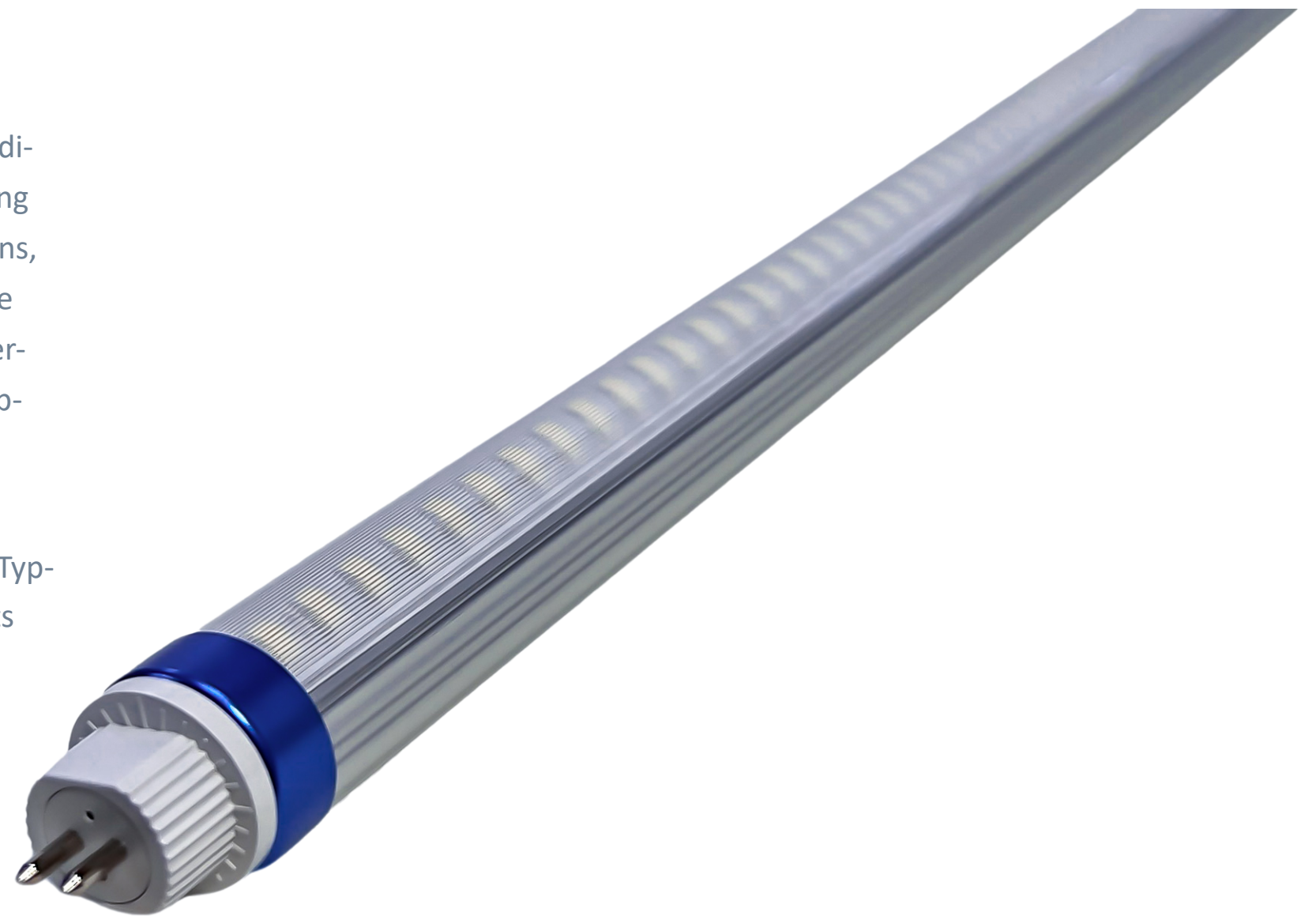
- Lamp replacements, for use with T5 Tombstones
- For single end power, Non shunted tombstones are required
- For double end power, Shunted tombstones are suggested

Approvals

Approved for use in Canada and USA

Warranty

Standard 5 year warranty, view our warranty policy for full details



	2feet	4feet
	548	1148
	Dimension	Dimension
A:	562mm	1162mm
B:	548mm	1148mm



Ordering Guide

Example: *RLT054-8C50K028L-UNVNDSE-FST5*

RL	Type	Length	CRI	CCT	Lumens	Voltage	Driver	Wiring
	T05 T5 Lamp	4 4 Foot	8C 80 CRI	50K 5000K	028L 2,800 Lumens	UNV 120-277V	ND Non-Dimmable	SE Single End Power (Frosted Lens) DE Double End Power (Clear Lens)

Lens	Pin Set
FS Frosted (Single End Power)	T5 Standard T5 Pins
CS Clear Smooth (Double End Power)	

Specification Chart

Lumens	Watts	Color	CRI
2,800	18	5000K	80

Testing is based on ambient 25c. As nominal calculations, actual outputs may vary based on product configurations. We reserve the right to correct any printing errors or mistakes in our tables