



# LZ Series

Vaportight Standard 4' Body

9,000 - 17,800 Lumens

Project: \_\_\_\_\_

Location: \_\_\_\_\_

Cat.No: \_\_\_\_\_

Notes: \_\_\_\_\_

## Product Description

The LZ Series Standard Body 4' fixture is a renowned vaportight fixture, ideal for applications needing extensive coverage on low to high ceilings. It offers versatility with multiple lumen packages and mounting options, featuring various latch and lens styles. The casing is made in the USA with a robust build and a thick seal for durability in dusty or wet environments, it suits installation heights from 12 to 22 feet. Final assembly in Ontario, Canada ensures meticulous craftsmanship, making it the ideal lighting solution for your needs.

## Application

This unit excels in industrial, commercial and agricultural settings where protection against water and dust is crucial. It thrives in applications such as washbays, dairy barns, sheep barns, horse barns, pig barns, welding factories, concrete factories, car washes, and more. Recommended for installation heights ranging from 12 to 22 feet, it's an exceptional choice for demanding environments.

## Features

- Configurations exceeding 140 lm/w
- Robust LED boards made in-house by JW LED Inc.
- Standard 0-10V dimming for control/precision

## Options

- Wide range of lumen outputs
- Variety of lens option's
- Customizable color temperature or CRI values
- Pre-wired whips (Specify in ordering code if required)

## Mounting

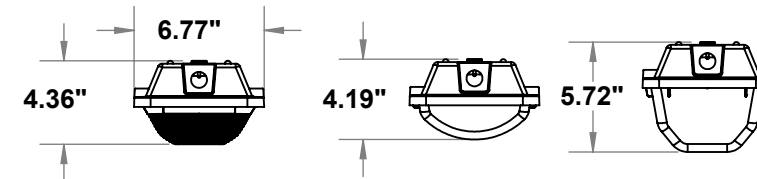
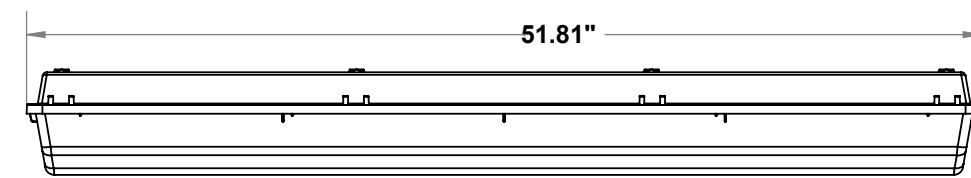
- Surface mount (This unit can be mounted directly to any ceiling or wall)
- Suspension mount (Chain mounting compatible by default)

## Approvals

Approved for use in Canada and USA, QPS Certified, NSF Rated Components, Neema 4x rated

## Warranty

Standard 5 year warranty, view our warranty policy for full details



NEMA 4X



## Ordering Guide

Example: LZS4-8C40K178L-347D1NW-FRPMMB

CRI	CCT	Lumens	Voltage	Driver	0-10V Wiring	Lens	Latches	Mounting
<b>8C</b> 80	<b>30K</b> 3000K	<b>178L</b> 17,800 Lumens	<b>UNV</b> 120-277V	<b>D1</b> 0-10V 1%	<b>NW</b> Not Wired for DIM	<b>CR</b> Clear Ribbed	<b>PM</b> POM (Nylon Latches)	<b>MB</b> Surface/Chain Mount Brackets
<b>9C</b> 90	<b>40K</b> 4000K	<b>164L</b> 16,400 Lumens	<b>347</b> 347V		<b>PW</b> Pre-Wired for DIM	<b>FR</b> Frosted Ribbed	<b>SS</b> Stainless Steel Latches	<b>NM</b> No Mount Bracket's
	<b>50K</b> 5000K	<b>114L</b> 11,400 Lumens				<b>CS</b> Clear Smooth		
	<b>65K</b> 6500K	<b>090L</b> 9,000 Lumens				<b>FS</b> Frosted Smooth		

## Options

**Blank** None  
**RTP** Retail Packaging  
**CD2** 2' Whip Pre-Wired (Black)  
**CD3** 3' Whip Pre-Wired (Black)  
**SN1** PIR Motion Sensor  
**SN2** PIR Motion Sensor (IP66)

## Specification Chart

Lumens	Watts	Color	CRI
17,800	122	5000K	80
16,400	113	5000K	80
11,400	78	5000K	80
9,000	62	5000K	80

Testing is based on ambient 25c. As nominal calculations, actual outputs may vary based on product configurations. We reserve the right to correct any printing errors or mistakes in our tables